

Winter 2015



HomeSafe Happenings

Our Mission: Creating safer, more productive lives for infants, children and families

Two Fabulous Fundraisers to Kick-Off 2016



Jump For HomeSafe

Join us Saturday, January 16 at the Palm Beach International Equestrian Center in Wellington for an evening of world-class equestrian competition. At our 6th Annual Jump For HomeSafe, you'll enjoy ringside seating, open bar, dinner and a fabulous silent auction all during the exciting "Battle of the Sexes" competition.

Well-known competitive riders Lillie Keenan, Hannah Patten, Samantha Wight and Emma Heise are the event co-chairmen, and are busy planning for a great party. Sponsors to date are *The Patten Family Foundation, Steven E. Bernstein Family Foundation, The Nichols Foundation and Wight Family Foundation.*

Tickets for Jump For HomeSafe are \$125 for adults and \$25 for children 12 and under. For more information about sponsorships and purchasing tickets, please visit www.jumpforhomesafe.org or call (561) 383-9842.



The Classic Rock & Roll Party

With *Lowrider Band*, the original composers of the mega-hits *Low Rider, Why Can't We Be Friends and Spill The Wine* as the headline entertainment, The Classic Rock & Roll Party will be a dance-filled evening for the lucky people attending this unique, high-energy event on Saturday, February 6 at the Seminole Hard Rock Hotel & Casino.

The party is like no other charity event, with its entertaining musical program produced by Emmy and Grammy award-winner, John Colby. We are so excited to have Paul Castronovo from the Paul & Young Ron

Show on BIG 105.9 FM, as this year's emcee. Event Host Nicko McBrain, lead drummer of the iconic heavy metal band Iron Maiden, will perform with other yet-to-be-named special guests and musical performers.

The Annual HomeSafe Hero Award will be presented that night to Suffolk Construction for its long-time and generous support of the children and families helped by HomeSafe.

To date, our generous sponsors are the *Seminole Hard Rock Hotel & Casino, Paradise Bank, The Hardcourt M. & Virginia W. Sylvester Foundation, Kathy Walsh & MacCutcheon Family Foundation, Premier Beverage, E.M. Lynn Foundation, Alpine Jaguar, MorseLife, Moss Foundation, Steven E. Bernstein Family Foundation, The Nichols Foundation, Debbie Lindstrom & Bob Sheetz, and James & Marta Batmasian.*

On Friday, February 5, the event will be preceded by a VIP-Celebrity golf tournament at the Ft. Lauderdale Country Club. The tournament, co-chaired this year by Kathy Walsh & Cathy Zumkehr, will have local pros playing, great give-a-ways, food by Rock & Roll Ribs, as well as live rock & roll on the course. Cost is \$500 per player, \$2,000 per foursome, with special packages available that include both golf and party tickets.

Tickets for The Classic Rock & Roll Party are \$500 per person. Sponsorships are still available. To learn more or to purchase tickets for both golf and the event, visit www.HelpHomeSafe.org or call (561) 383-9842.

How Your Donation Changes Lives at HomeSafe

Healthy Beginnings

- 🏠 Healthy Beginnings conducts free developmental assessments for all children under the age of five throughout Palm Beach County. During the 2014-15 fiscal year, more than 2,000 children were screened for their behavioral and social/emotional health to ensure they are ready for kindergarten.
- 🏠 More than 200 portable cribs were distributed to parents in need to ensure their child has a safe place to sleep. Educational materials were also distributed to help educate parents on safe sleep practice.
- 🏠 During our 2014-15 fiscal year, 16,939 babies were born in Palm Beach County. Our hospital liaisons screened 99% of the moms after delivery, for risks including post-partum depression and bonding.
- 🏠 230 families participated in Growing Smart - a voluntary, two-year program that teaches parents about developmental stages and gives parenting tips. A child's development is monitored by the developmental support specialist who will provide a referral, should a concern be discovered.

“I learned about the Healthy Beginnings program after I delivered my daughter. I had just moved here from out-of-state and didn't have a safe place for my newborn to sleep. I was given a portable crib and information about proper sleep techniques. I was also informed of other services that could help me help ensure my daughter reached her developmental milestones.”

– Karina, Healthy Beginnings client

SafetyNet

- 🏠 225 children, teens and adults were enrolled in SafetyNet's weekly therapeutic support groups and services for victims of domestic violence. The average length of participation in the program is 4-6 months.
- 🏠 89 out of 112 teen and adult clients enrolled in SafetyNet demonstrated increased adaptive coping & resiliency skills (using a safety plan, increased self-confidence, working toward self-sufficiency) as determined by pre and post scale assessments.
- 🏠 399 new referrals were provided with intervention and prevention information/services.

I feel safe here to talk about my stuff.

– SafetyNet child client



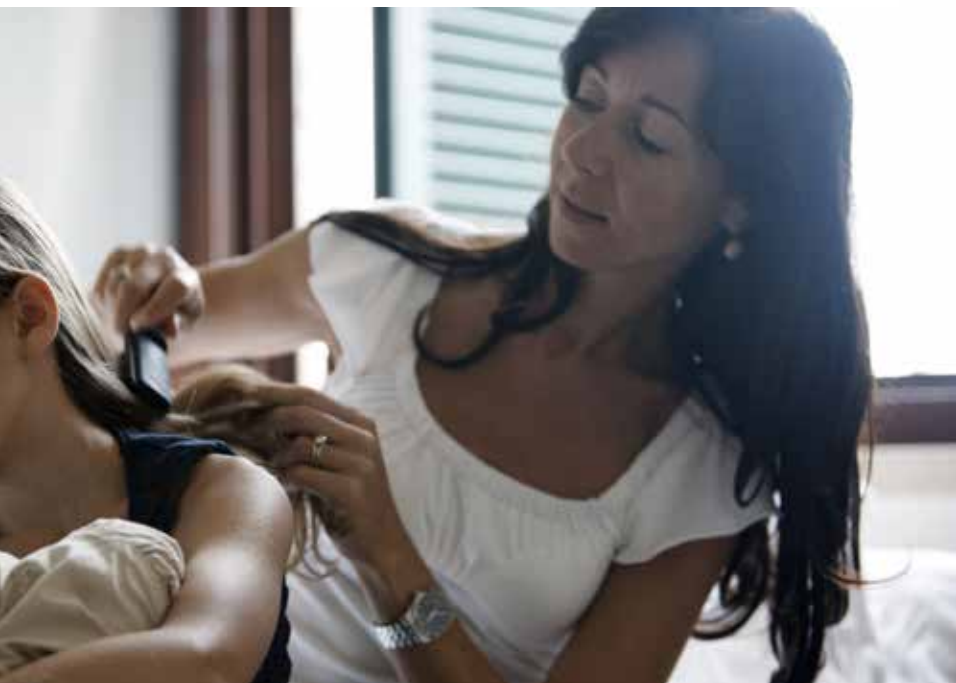
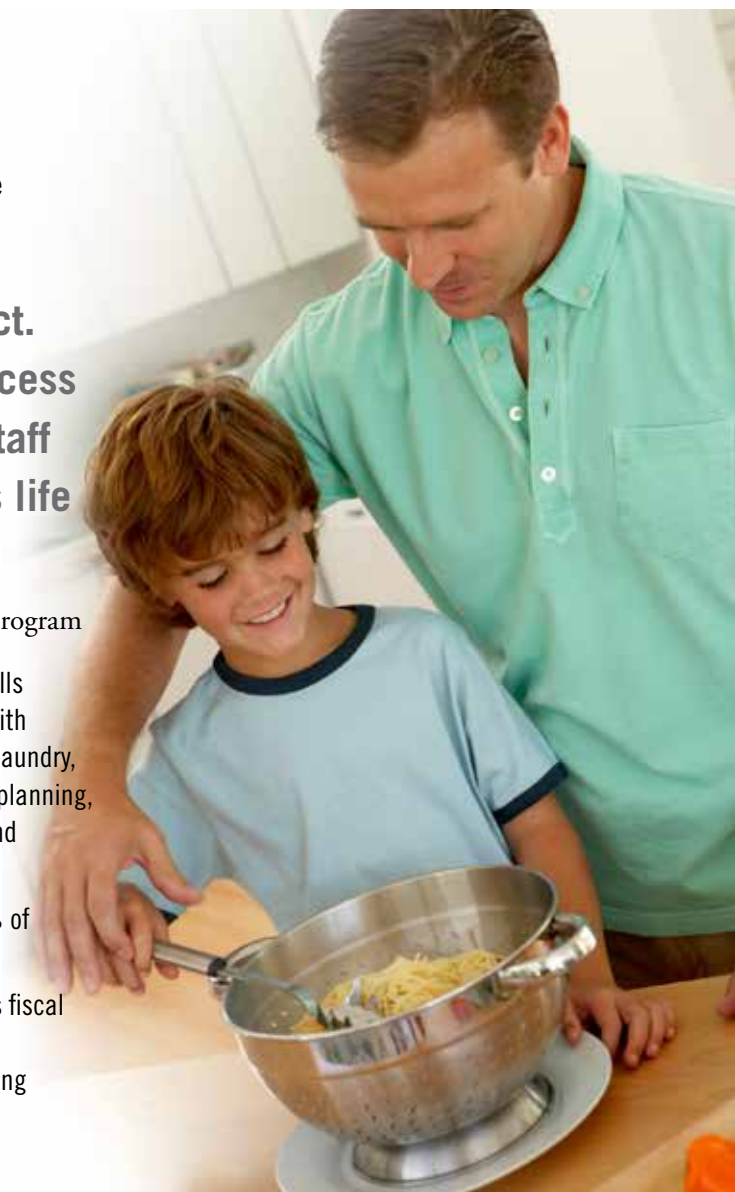
Residential Group Care/ LifeSkills™

- 🏠 During fiscal year 2014-15, a total of 102 girls and boys, ages 8 – 17, received full-time care and treatment services at five home-like group homes located in Boca Raton, Lake Worth and West Palm Beach.
- 🏠 Six of the eight clients who aged out of our residential program (during the fiscal year), are currently enrolled in high school, college and/or working. All are maintaining safe and stable housing.

They listened to him. They showed him respect. They showed him dignity. Because of that process and the therapy, and the time and love from staff that showed they cared, I think it changed his life and brought us back together.

– Susan, whose son graduated from the residential program

- 🏠 All of the 48 clients in our residential group care are enrolled in our LifeSkills program. Twice a week, clients attend group trainings that provide them with the knowledge and tools they will need for independent living – how to do laundry, keeping a clean room, personal hygiene, shopping & cooking, educational planning, using community services, applying for a job, etc. Clients are tested pre and post-training. Clients consistently increased their scores by 20% or more.
- 🏠 On the last day of school, of the 45 clients in our residential program, 98% of them were promoted to the next grade level.
- 🏠 On average, the amount of time a client stayed in the program (during this fiscal year) before being discharged was 9 months. Of the 57 clients discharged during the fiscal year, 31 were planned discharges, with 27 of those stepping down to a lower level of care.



Through this program, I have learned to recognize the signs and it has helped me be a stronger individual with set boundaries.

– SafetyNet adult client



HomeSafe

2840 Sixth Avenue South
Lake Worth, FL 33461

NON-PROFIT ORG
US POSTAGE
PAID
WEST PALM BEACH, FL
PERMIT No. 1076

Your Donations Make a Difference

Your support of HomeSafe goes a long way in helping victims of child abuse and domestic violence. Eighty-seven cents of every dollar you give goes to local programs and services for clients.

There are a variety of ways to support HomeSafe:

- **Name HomeSafe as a beneficiary in your will, life insurance or IRA**
- **Send a check made payable to HomeSafe**
- **Donate online at HelpHomeSafe.org**
- **Purchase tickets and attend our events**

Board of Directors 2015-2016

Val Perez
President

Alice Nelson
Vice-President

Lawrence W. Gonnello
Treasurer

Rex B. Kirby
Secretary

Steven Bernstein
President-Elect
Member At Large

Roberto Vargas
Past President

William Berger

Cherie Copenhaver

Suzi Goldsmith
Roy Hinson

Lynn Holcomb
Ward Kellogg

David M. Layman

Sonny Maken

Mike Nichols
Diego Rico

Thomas J. Rooney

Matthew Ladika
Chief Executive Officer

HomeSafe is a 501(c)3 non-profit organization providing results-driven prevention and intervention programs for child abuse and domestic violence. Contributions benefit HomeSafe (CH#33335). A COPY OF THE OFFICIAL REGISTRATION AND FINANCIAL INFORMATION MAY BE OBTAINED FROM THE DIVISION OF CONSUMER SERVICES BY CALLING TOLL-FREE (800-435-7352) WITHIN THE STATE OR AT WWW.FRESHFROMFLORIDA.COM/DIVISIONSOFFICES/CONSUMERS SERVICES. REGISTRATION DOES NOT IMPLY ENDORSEMENT, APPROVAL OR RECOMMENDATION BY THE STATE. HomeSafe receives 100% of each contribution.